


RESEARCH ARTICLE

Open Access



# A living tool for the continued exploration of microplastic toxicity

Leah M. Thornton Hampton<sup>1\*</sup> , Heili Lowman<sup>1,2</sup>, Scott Coffin<sup>3</sup>, Emily Darin<sup>1</sup>, Hannah De Frond<sup>4</sup>, Ludovic Hermabessiere<sup>4</sup>, Ezra Miller<sup>5</sup>, Vera N. de Ruijter<sup>6</sup>, Andrea Faltynkova<sup>7</sup>, Syd Kotar<sup>1</sup>, Laura Monclús<sup>7</sup>, Samreen Siddiqui<sup>8</sup>, Johannes Völker<sup>7</sup>, Susanne Brander<sup>8</sup>, Albert A. Koelmans<sup>6</sup>, Chelsea M. Rochman<sup>4</sup>, Martin Wagner<sup>7</sup> and Alvine C. Mehinto<sup>1</sup>

## Abstract

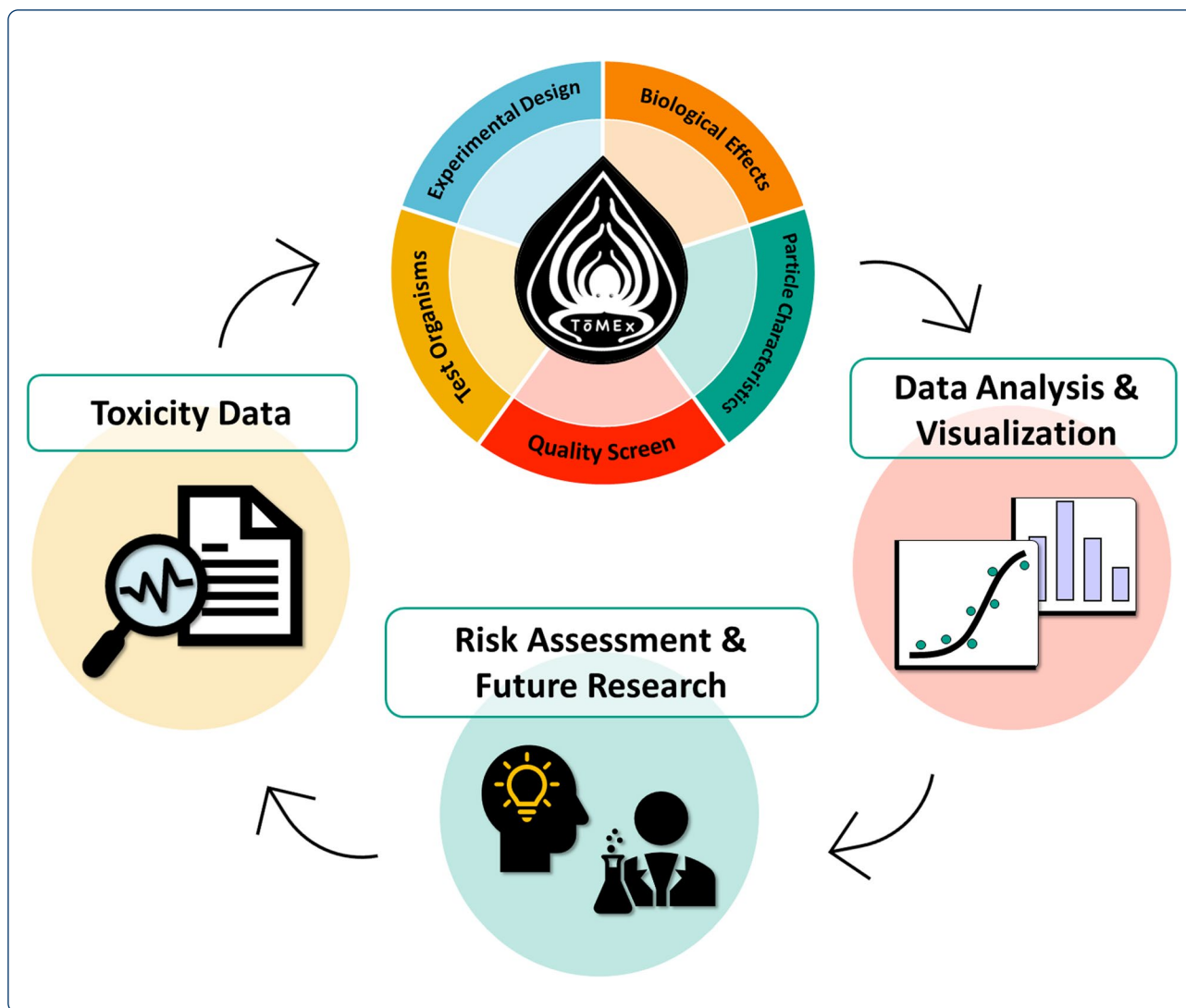
Throughout the past decade, many studies have reported adverse effects in biota following microplastic exposure. Yet, the field is still emerging as the current understanding of microplastic toxicity is limited. At the same time, recent legislative mandates have required environmental regulators to devise strategies to mitigate microplastic pollution and develop health-based thresholds for the protection of human and ecosystem health. The current publication rate also presents a unique challenge as scientists, environmental managers, and other communities may find it difficult to keep up with microplastic research as it rapidly evolves. At present, there is no tool that compiles and synthesizes the data from these studies to allow for visualization, interpretation, or analysis. Here, we present the Toxicity of Microplastics Explorer (ToMEx), an open access database and open source accompanying R Shiny web application that enables users to upload, search, visualize, and analyze microplastic toxicity data. Though ToMEx was originally created to facilitate the development of health-based thresholds to support California legislations, maintaining the database by the greater scientific community will be invaluable to furthering research and informing policies globally. The database and web applications may be accessed at <https://microplastics.sccwrp.org/>.

**Keywords:** Microplastic, Toxicity, Aquatic organisms, Human health, Database

## Graphical Abstract

\*Correspondence: [leahth@sccwrp.org](mailto:leahth@sccwrp.org)

<sup>1</sup>Toxicology Department, Southern California Coastal Water Research Project, 3535 Harbor Blvd. Suite 110, Costa Mesa, CA 92626-1437, USA  
Full list of author information is available at the end of the article



**Introduction**

Microplastics are a multifaceted contaminant suite, comprising a vast array of polymers, sizes, morphologies, and added and adsorbed chemicals [1]. The environmental compartments contaminated by microplastics are also diverse as microplastic particles are frequently detected in aquatic environments as well as sediment, air, food, and drinking water. The pervasiveness of microplastics has led to questions regarding their potential impacts on aquatic ecosystems [2–4] and human health [5–8]. Additional concern may also be warranted as microplastic concentrations are predicted to continuously increase unless the management or production of plastic waste undergoes a drastic change [9, 10].

Concerns regarding the potential impacts of microplastics have led to legislative mandates aimed to assess the risks of microplastic exposure [11, 12]. However,

despite the abundance of studies detailing the occurrence of microplastics in various matrices, our understanding of microplastic toxicity is still emerging. Characterizing the environmental health risks posed by microplastics requires researchers to consider the mixture of both physical (e.g., size, morphology), chemical (e.g., polymer composition, chemical additives, sorbed chemicals), and biological (pathogens, natural biofilms) characteristics of microplastics that may influence toxicological outcomes [13]. Hundreds of studies on the occurrence and effects of microplastics have been published within the last decade to better understand the scale and potential impacts of microplastics as well as support various regulatory initiatives [14]. The available literature describes a multitude of possible adverse biological effects, but the mechanisms for how microplastics may be impacting both human and aquatic health are not yet completely understood. Given

these challenges and complexities, there is a need for tools that facilitate data exploration, summarization, and analysis to inform science-based regulatory, and policy-related decisions.

To identify the key drivers of microplastic toxicity and inform risk assessment strategies based on existing knowledge, we created the Toxicity of Microplastics Explorer (ToMEx). ToMEx includes both a microplastic toxicity database and accompanying R Shiny application (app) to facilitate data visualization and analysis (<https://microplastics.sccwrp.org/>). The database was created by systematically mining the available microplastic toxicity literature concerning both aquatic organisms and human health. More than 70 unique variables were either extracted or derived from each study, including experimental design, test organisms, biological effects, and particle characteristics of microplastics used. In addition, information which may be used to select studies meeting various quality criteria were also documented. The accompanying R Shiny app allows users to intuitively interface with the database and provides tools for data summarization, filtering, synthesis, and analysis. ToMEx was originally created and designed to facilitate the identification of the key pathways by which microplastics affect biota, prioritize the characteristics (e.g., size, shape, polymer) of microplastics that are of greatest biological concern, and identify critical thresholds for each at which those biological effects become pronounced as part of the California Microplastics Health Effects Workshop [15]. However, the potential applications of ToMEx are far-reaching as scientists, environmental managers, and other communities across the globe may use ToMEx to quickly summarize, synthesize and analyze data to identify what is known and unknown regarding microplastic toxicity in both humans and aquatic organisms, and to inform the experimental design of studies.

## Methods

### Database Curation

#### Data sources

The ToMEx database is divided into two distinct parts: Aquatic Organisms and Human Health. Data for the Aquatic Organisms Database was sourced from three recent reviews of the microplastic toxicity literature [2, 16, 17]. An original literature review was conducted to populate the Human Health Database in July 2020 using the ProQuest database using the following search strings: ((effect OR impact OR endpoint OR toxicity) AND (microplastic(s) OR microbead OR polyethylene (PE) OR polystyrene (PS) OR polyamide (PA) OR polypropylene (PP) OR polyvinyl chloride (PVC)) AND (human OR human health)). Additional studies were added to the

Aquatic and Human Health databases until December 2020 and April 2021, respectively.

Each study was screened to ensure that it focused on at least one of the following: 1) the toxicological effects of microplastics, 2) the toxicological effects of microplastic leachates (i.e., chemicals migrating from microplastics), and/or 3) the toxicological effects of microplastics in the presence of chemical contaminants (i.e., chemical co-exposure or chemical transfer studies). Studies exclusively focused on the effects of macroplastics (>5 mm), field observations or toxicokinetics were excluded. A summary of each database is provided in Table 1, and a complete list of studies included in each database may be found in the Supplementary Information.

### Data Mining & Structure

Data were extracted from each study according to the following six broad categories. Each category is briefly described below, and detailed descriptions may be found in Table S1. When specific data were not available or provided by the study, fields were populated as “Not Available” or “NA.”

**Data types** Each data point within the database is categorized according to the study design to distinguish between particle- and chemical-driven effects associated with microplastics. Specifically, data are categorized as particle only (i.e., organisms are exposed only to microplastics with no additional chemicals added by the researchers), chemical co-exposure (i.e., organisms are simultaneously exposed to microplastics and additional chemicals), chemical transfer (i.e., microplastics are incubated with additional chemicals prior to exposures), or leachate (i.e., chemicals are extracted from microplastics

**Table 1** Current summary of the Toxicity of Microplastics Explorer Aquatic Organisms and Human Health Databases

	Aquatic Organisms	Human Health
<i>Total Number of Publications</i>	162	55
Particle Only	155	54
Chemical Co-Exposure	12	7
Chemical Transfer	8	–
Leachate	10	–
<i>Data Points</i>	5871	3904
Acute data	3462	–
Chronic data	2409	–
In vivo data	5829	2512
In vitro data	42	1392
<i>Species Represented</i>	109	6
Freshwater species	40	–
Marine species	69	–

using a solvent and organisms are exposed to the resulting leachate only). It should be noted that some studies contain a mixture of different data types, and that data from chemical co-exposure, chemical transfer, or leachate studies are not necessarily relevant for risk assessment.

**Test organisms** Information regarding the genus, species, taxa, environment, life stage, and sex of test organisms was extracted from each study. For aquatic organisms, the maximum ingestible particle size was based on mouth size opening, which was either sourced from Koelmans et al., [18] or estimated for each species using methods previously developed by Jåms et al. [19].

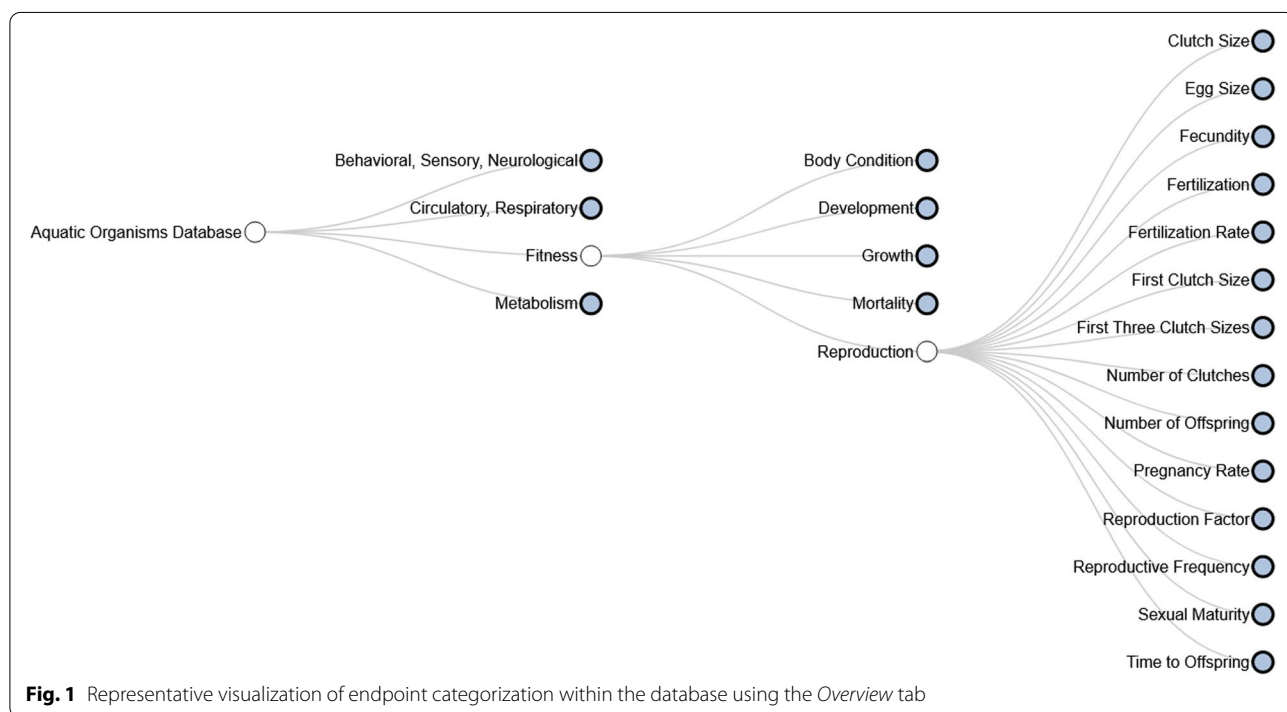
**Experimental parameters** Information about the experimental design and test conditions including, but not limited to, exposure duration, exposure media (e.g., water, sediment, food), use of solvents in addition to water (e.g., ethanol), sample size, dose, and the number of treatment groups was extracted from each study.

**Biological effects** Biological effects data were captured using modified methods from Jacob et al. [17]. Briefly, all study endpoints were identified and hierarchically sorted into “Broad” and “Specific” endpoint categories according to their biological significance (Fig. 1). Each endpoint was also assigned a biological level of organization. The target cell type or organ was recorded for tissue, cellular, and subcellular effects. The occurrence

of an effect was defined as a statistically significant effect relative to the control group. For example, if a statistically significant reduction in body length was observed at least once throughout a microplastic exposure, this observation would be recorded as a “YES” for effect. If the differences were not statistically significant, this observation was recorded as a “NO.” Effect concentrations were also assigned to each endpoint where applicable (i.e., no observed effect concentration (NOEC), lowest observed effect concentration (LOEC), highest observed effect concentration (HONEC)) or recorded if provided in the study (e.g., effect concentrations, ECx).

**Particle characteristics** Key particle characteristics such as polymer type, size, morphology, density, charge, functionalization, and weathering were extracted. In addition to nominal and (if available) measured particle sizes, data were also binned into broad categories according to the size ranges provided in the California State Definition of Microplastic [20] based on the average particle size used in the study.

**Experimental verification** Details pertaining to the verification of key particle characteristics, background contamination, and the exposure concentration were recorded. The types of data captured were based on criteria developed by de Ruijter et al. [16] with some modification. For instance, it was recorded whether studies validated the



polymer type, morphology, and size of microplastics as well as which methods were used to do so.

### Data prioritization screening

In the Aquatic Organisms Database, studies were scored by two independent reviewers according to the technical and risk assessment quality criteria developed by de Ruijter et al. [16] with some modification to address the specific aims of the California Microplastics Health Effects Workshop (Table S2, see [21] for more details). If studies had been previously evaluated, then those scores were used [16]. Only data pertaining to particle only effects were scored, chemical transfer, chemical co-exposure, and leachate data types were outside the scope of this study and were excluded from the scoring exercise. In the Human Health Database, in vivo ingestion studies were scored according to quality criteria pertaining to particle characteristics, experimental design, and risk assessment [22] (S3).

No scored study in either database passed all the quality criteria (i.e., received a score of at least 1). Thus, a subset of 14 selected criteria was designated as essential “red criteria.” These criteria are intended to reflect the minimum requirements for a study to be considered for a preliminary assessment, with the understanding of the significant limitations of the findings [21, 23]. It should be noted that these “red criteria” are not intended to be an acceptable replacement for the full set of criteria presented by de Ruijter et al. [16] or Gouin et al. [22].

### Dose conversions

Most studies reported doses in either particle number or mass per volume, rarely both. Calculations to convert doses from numerical to mass-based concentrations as well as estimates of total particle volume and surface area were performed whenever possible as follows.

### Particle volume

The average or median particle size (depending on if authors reported a single average or range) was used to estimate particle volume according to morphology. Spheres were assumed to be perfect spheres ( $V = \frac{4}{3} \pi r^3$ ) where  $r$  = sphere diameter/2. Fragment volume was estimated using methods adapted from Koelmans et al. [18] ( $V = \frac{\pi}{6} L^3 CSF^2$ ) where  $L$  = particle length and  $CSF = 0.4$  (i.e., the average Corey Shape Factor for environmental microplastic fragments) [24]. Fibers were assumed to be cylinders ( $V = \pi r^2 h$ ) where  $r$  = particle width/2 and  $h$  = particle length. In cases where fiber width was not provided (8 out of 11 studies), width was assumed to be 15  $\mu\text{m}$ , which is the average width of environmental

microfibers [24]. Toxicity studies that reported fiber widths were  $11.8 \pm 3.9 \mu\text{m}$  (mean  $\pm$  standard deviation).

**Particle mass** Particle mass was estimated by multiplying the estimated volume by particle density. In cases where density was not provided, median values for the reported polymer from Kooi & Koelmans [24] were used (Table S4).

### Particle surface area

For spherical particles, surface area was estimated using the equation for the surface area of a sphere,  $S = 4\pi r^2$ . For fragments, surface area was estimated using the equation for the surface area of an ellipsoid ( $S = 4\pi \left( \frac{(ab)^{1.6} + (ac)^{1.6} + (bc)^{1.6}}{3} \right)^{1/1.6}$ ) with  $a$ ,  $b$ ,  $c$  being equal to 0.5x length, 0.5x width, and 0.5x height, respectively [25]. For fibers, surface area was estimated using the equation for the surface area of a cylinder ( $S = 2\pi r h + 2\pi r^2$ ), where  $r$  = particle width/2, and  $h$  = particle length. For cases in which particle width and height were reported, such values were used. Particle width was not often reported for fragments, in which case widths were estimated to be  $0.77 \times$  length, which is the average ratio for microplastic fragments in marine surface waters, and height was assumed to be  $0.67 \times$  width [25]. For fibers, again width was assumed to be 15  $\mu\text{m}$  when not reported [24].

### ToMEx app

#### App development and design

To enable users to explore the database and increase the utility of ToMEx, a web-based app, which may be accessed at <https://microplastics.sccwrp.org>, was built using Shiny [26], an R package designed to produce interactive web apps using a graphical user interface without requiring users to download R or write commands. The app also depends on numerous R packages, listed in Table S5. The ToMEx app is divided into sections, each with a different purpose and function, aimed at providing the user with a complimentary set of tools to form and test hypotheses, explore relationships, visualize hierarchical relationships of toxicity endpoints, and investigate quality criteria of studies in the database. Each section is briefly described below.

**Overview** This tool displays a series of data visualizations designed to summarize the database. Stacked bar graphs displaying the number of “endpoints” measured are used to visualize the relative abundance, diversity, and bias in the underlying datasets. There is also an interactive graphic to visualize how endpoints are categorized using the *collapsibleTree* package (v 0.1.7 [27]); (Fig. 1).

**Search** This tab may be used to access selected components of the database using a series of search bars to find and download specific data types of interest.

**Exploration** This tab generates customizable figures to visualize differences in toxicity by relevant factors (i.e., organismal characteristics, experimental design, particle characteristics) using boxplots, “violin plots,” or “beeswarm plots” (v0.6.0; Clarke & Sherill-Mix 2017 [29]). Users can filter the database and update the plots using a series of widgets. Filtered data may be downloaded to investigate further.

**Study screening** This tab allows users to visualize the results of the previously described data prioritization exercise in the form of a heatmap. Data may be filtered in a similar manner to the *Exploration* tab.

**Species sensitivity distribution** This tool provides the ability to probabilistically model the variation of species sensitivities to stressors and estimate ecosystem risks due to microplastics by generating species sensitivity distributions (SSDs) using the *ssdtools* R package Thorley and Schwartz [30]. Users may quickly filter data from the database and generate SSDs with the flexibility to manipulate model parameters (e.g., selection of effect concentration or dose descriptor, application of assessment factors, data collapsing method, etc.). The default settings of this tool are aligned with the threshold development framework presented by Mehinto et al., [21]. This tool is only applicable to the Aquatic Organisms database.

**Calculators** This tool allows users to 1) simulate realistic distributions of microplastics (including size, shape, density, mass, volume) using Monte-Carlo modelling techniques described in Kooi & Koelmans [24], and 2) perform alignments described in Kooi et al. [25]. For the simulated distribution tool, users may modify the particle size power law to simulate distributions of particles relevant to the matrix of interest (e.g., marine surface water, sediment, drinking water, etc.) [25]. The simulated dataset can be downloaded and manipulated in other software to estimate parameters, such as the ratio of mass for particles within a given size range relative to another size range. Users may upload toxicity data from laboratory experiments (polydisperse or monodisperse) and align to an ecologically relevant metric (ERM) of interest using site-specific microplastics probability distributions parameters and user-defined bioavailability criteria. This tool is only applicable to the Aquatic Organisms database.

**Predictions** This tool allows users to predict effect concentrations using the machine-learning model developed by (Coffin S, Cowger W, Koelmans AA, Thornton Hampton LM. Disentangling the complex relationship between microplastic effects and traits using machine learning. In preparation 2022a.). The user may upload a dataset containing relevant information for a real or theoretical laboratory test exposure (e.g., exposure duration and other experimental design parameters, species characteristics, particle characteristics, effect characteristics), and use one of two optimized random forest models described in (Coffin S, Cowger W, Koelmans AA, Thornton Hampton LM. Disentangling the complex relationship between microplastic effects and traits using machine learning. In preparation 2022a.) to predict either the tissue-translocation ERM-aligned or food dilution ERM-aligned exposure concentrations for a given effect (e.g., mortality) and effect concentration (e.g., NOEC, LOEC). The model may be re-trained once additional toxicity data is uploaded to ToMEx, with the anticipation of increasingly accurate predictions. This tool is only applicable to the Aquatic Organisms database.

#### **Additional application features**

##### ***Data selection based on data type and data prioritization scores***

In the *Exploration* and *Species Sensitivity Distribution* tabs, the database may be filtered to select specific data types. By default, “particle only” type data are initially selected. Before choosing a different selection (e.g., including leachate data), users should carefully consider the data types most appropriate for their specific aims and/or research questions.

##### ***Data selection based on data type and data prioritization scores***

In the *Exploration* and *Species Sensitivity Distribution* tabs, users may also filter the database to exclude studies that did not meet the “red criteria.” Scores for all data screening criteria are also available for download in the *Search* tab.

##### ***Dose metric selection***

In the *Exploration* and *Species Sensitivity Distribution* tabs, radio buttons provide the ability to toggle between exposure metrics of interest, including mass per volume, particles per volume, volume per volume, and surface area per volume.

### **Alignment to ecologically relevant metrics**

In the *Exploration* and *Species Sensitivity Distribution* tabs, effect concentrations of monodisperse microplastics may be compared to polydisperse distributions of microplastics that occur in the marine environment. Concentrations may be aligned to an Ecologically Relevant Metric (ERM) (e.g., surface area, volume) as described by Koelmans et al. [18, 31]. An ERM is the dose metric that one needs to use to quantify dose in the context of a certain known effect mechanism. For a given ERM, the concentration may be related to both mono- or polydisperse particles interchangeably so long as the total magnitude of ERM remains the same [18]. Following alignment to an ERM, concentrations may be re-scaled to a default size range (e.g., 1–5000  $\mu\text{m}$ ) in the app using methods described in Koelmans et al. [18].

To align a monodisperse effect concentration to an ERM, the effect concentration is also corrected for bioavailability. In the ToMEx app, alignments to surface area and volume are assumed to directly relate to effects triggered by translocation and food dilution, respectively, however all calculations are modular. By default, alignments to volume are adjusted to exclude particles larger than the maximum gape size for a given species. By default, alignments to surface area exclude particles larger than 83  $\mu\text{m}$ , the predicted upper size limit for translocation [21], however users may change this value to align with updated findings or to test the sensitivity of this factor. For more details see Koelmans et al. [18], Kooi et al. [25], and Mehinto et al. [21].

## **Results and discussion**

### **Applications**

The ToMEx database and accompanying app were originally created to facilitate the development of health-based thresholds and support California legislations by coalescing microplastics toxicity data and providing user-friendly tools for data visualization and analysis. Specifically, it was designed to assess how toxicity varied based on key microplastic characteristics such as size, morphology, polymer composition, and observe how effect patterns may shift when data are visualized or analyzed using different exposure metrics (i.e., mass, particles, volume, and surface area per volume). To our knowledge, ToMEx is the largest, most detailed collection of open access microplastics toxicity data, and may continue to be used and updated by scientists and environmental managers alike to efficiently access and analyze microplastic toxicity data for a wide variety of purposes.

### **Research applications**

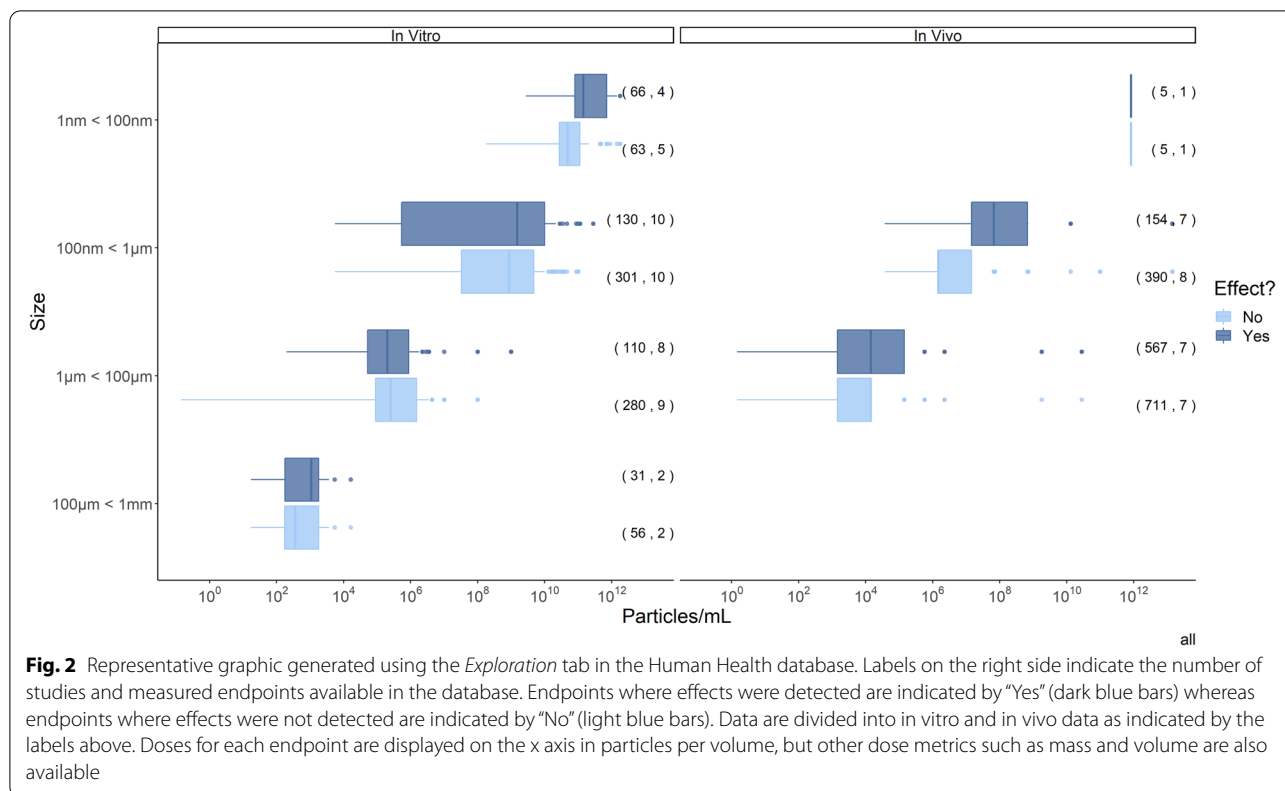
The ToMEx database and accompanying app enables researchers to quickly identify, extract, visualize, and analyze data that is most relevant to their research questions and objectives. Similar tools have been developed for other environmental contaminants, such as the United States Environmental Protection Agency's (USEPA) ECOTOX Knowledgebase, an open access database which houses toxicity data pertaining to a wide array of contaminants and organisms [32]. These databases provide a substantial advantage over traditional literature searches or mining data individually. For instance, a scientist seeking to learn more about what is known regarding the effects of polyethylene fragments in crustaceans may quickly use the *Search* tool to filter and download a list of studies meeting these criteria.

Understudied areas of research may also be easily identified using ToMEx. This was particularly apparent using the *Exploration* tool. For example, visualizing data by particle morphology in the Human Health database highlights the lack of data for microplastic fragments with only three studies available for in vitro data and only one study for in vivo data (Fig. 2). Even more striking is the complete absence of toxicity data for microplastic fibers, despite their abundance across environmental matrices. These and other similar data gaps should be filled to gain a more complete understanding of microplastic toxicity.

The ToMEx database may also inform future experimental designs, not only by aiding in the identification of research gaps as described above, but also by facilitating the selection of experimental doses and relevant toxicity pathways. Because ToMEx is structured around individual endpoints, the *Exploration* tool can be used to visualize the doses at which biological effects become prevalent for any given endpoint. This may provide context about the likelihood of detecting adverse biological effects at a given dose. Furthermore, these plots can also provide some information about the relative toxicity of various particle characteristics or sensitivities of various species to microplastics. The *Species Sensitivity Distribution* tool in the Aquatic Organisms Database can quickly identify which species may be most susceptible to microplastic exposure, and even more powerful is the ability to align these data to an ERM of interest for a polydisperse distribution of particles (Fig. 3).

### **Management applications**

ToMEx may also be employed to address regulatory needs and inform risk assessments for both human health and the environment. Here, it was applied to inform the legislative mandates of California's Senate Bills 1422 and 1263. More specifically, workshop participants



were tasked with identifying the primary pathways by which microplastics cause adverse effects, prioritizing the characteristics that are of greatest biological concern (Hampton et al., 2022 [33]), and identifying critical thresholds at which adverse effects become pronounced [21, 23]. Critical thresholds for the aquatic environment were derived using a combination of tools provided by ToMEx [21], and for assessing impacts to human health additional tools were used (e.g., benchmark dose modelling software; Coffin et al., [23]). Data most appropriate for threshold development were selected based on a variety of factors, including specific screening criteria, and threshold calculations were quickly performed. The efficiency of this process allowed for in-depth discussions and exploration of numerous strategies for threshold derivation, as well as assessments of the sensitivities of derivation parameters [21]. Regarding microplastics in drinking water, ToMEx was used to identify patterns across studies which then facilitated discussions on the suitability of these studies for potential threshold development. For instance, adverse effects on male reproduction such as decreases in sperm viability, were detected across multiple studies conducted by independent groups of researchers (Coffin et al., [23]). During this effort, most data were deemed unfit for threshold development to inform management actions (Coffin et al., [23]).

However, continued curation of the Human Health database could allow for refinements as the field of microplastics research advances.

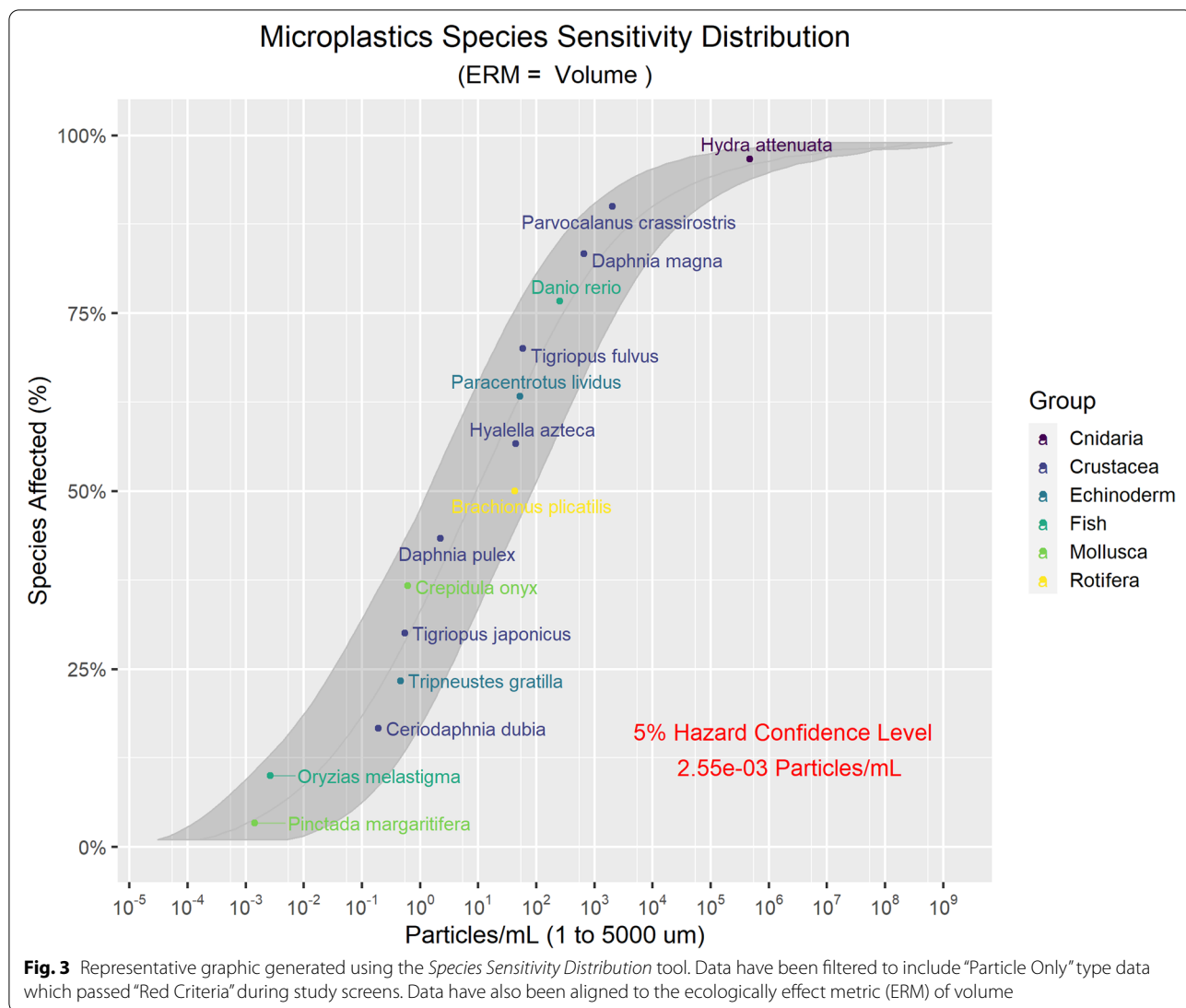
It is anticipated that ToMEx will prove useful in informing similar regulatory decisions regarding microplastics. Besides providing a large, curated dataset for microplastic toxicity, ToMEx also allows users with diverse expertise to intuitively visualize and interact with data to initiate discussions and formulate ideas to address future regulatory challenges without the need for coding expertise. The flexibility of the ToMEx app will also allow regulators to tailor analyses to their specific needs. For example, the USEPA omits algae and plants from SSDs used for deriving water quality criterion, while the European Chemicals Agency requires their inclusion [34]. Users can use ToMEx to filter data prior to building SSDs and can customize statistical models used to fit distributions based on preferred choices.

### Conclusions

#### ToMEx moving forward

As microplastics toxicity research rapidly expands and evolves, keeping up to date with the latest scientific findings will become increasingly difficult for researchers, environmental managers, and the public alike. ToMEx has the potential to become a valuable tool to quickly





explore, summarize, and analyze data from hundreds of scientific studies, lessening the burden on individuals to mine and process these data themselves. In addition, the data visualization tools built into ToMEx provide a variety of customizable graphics that may be used to facilitate scientific communication in research, academic, and management settings. These features can advance scientific collaboration and discussion as well as policy decision-making. Finally, the accessibility of ToMEx is likely its most important feature. By making the ToMEx database and app open access and open source, respectively, individuals can download and interact with a wealth of data that may otherwise be unavailable to them. Overall, prioritizing accessibility and inclusivity will aid in democratizing microplastics research.

Though ToMEx provides a large collection of toxicological microplastics data, it is not exhaustive. In its

current state, ToMEx represents an incomplete "snapshot" of the available data up until roughly the end of 2020. However, given the growing number of publications on microplastics toxicity, the database will become rapidly outdated. To maintain its utility, scientists are encouraged to upload data from their peer-reviewed toxicity studies to ToMEx using an online form or template, ensuring that it houses the most current data. These data will be curated for accuracy by at least two independent researchers before being incorporated into the database. As data management practices become more advanced, it is anticipated that the maintenance of ToMEx will evolve as well. The existing analysis tools will also be updated as refinements and improvements are developed with the help of the greater scientific community. For instance, multivariate analysis tools allowing users to explore how

combinations of variables influence toxicological outcomes would be a powerful addition to ToMEx. This database may also be expanded by linking ToMEx to other specialized databases or data analysis tools. Integration of microplastic toxicity data with other key areas of microplastic research (e.g., site-specific environmental occurrence, toxicokinetics, plastic-associated chemicals, risk assessment) will broaden the potential applications of ToMEx. While there are many exciting possibilities for the future of ToMEx, any work to maintain or improve upon this tool will require significant support and participation from the microplastic community. The database, app, and detailed instructions for how researchers may upload toxicity data are available at <https://microplastics.sccwrp.org>.

#### Abbreviations

app: Application; CSF: Corey shape factor; ERM: Ecologically Effect Metric; EC: Effect concentration; HONEC: Highest observed effect concentration; LOEC: Lowest observed effect concentration; NOEC: No observed effect concentration; SSD: Species Sensitivity Distribution; ToMEx: Toxicity of Microplastics Explorer; USEPA: United States Environmental Protection Agency.

#### Supplementary Information

The online version contains supplementary material available at <https://doi.org/10.1186/s43591-022-00032-4>.

Additional file 1 . .

#### Acknowledgements

The authors acknowledge the participants of the California Health Effects Workshop and participants of the Pacific Northwest Consortium on Plastics, who performed early testing and provided critical feedback for improving app functionality. The authors also acknowledge J.C. Leapman for illustrating the ToMEx logo.

#### Peer review

In keeping with research integrity principles, all SCCWRP workshop articles co-authored by Dr. Steve Weisberg, Dr. Albert Koelmans, and other *Microplastics and Nanoplastics* editors were handled by independent editors of the journal.

#### Authors' contributions

L.M.T.H., A.C.M., and S.C. conceptualized the database and web application. L.M.T.H. led data aggregation and database curation. H.L. led web application development assisted by L.M.T.H., S.C. and E.D. L.H., H.D., E.M., V.N.R., A.F., S.K., L.M., S.S., A.A.K. and J.V. assisted with database curation. S.B., A.A.K., C.R., M.W. and A.C.M. provided critical feedback and supervision support. L.M.T.H., S.C., L.H., A.A.K., C.R. and A.C.M. prepared the manuscript. The authors read and approved the final manuscript.

#### Funding

Funding for this project was provided by the California State Water Resources Control Board.

#### Availability of data and materials

The web applications may be accessed at <https://microplastics.sccwrp.org>. The database is open access and may be downloaded via the web applications. Source code for the Aquatic Organisms and Human Health apps may be found at [https://github.com/SCCWRP/aq\\_mp\\_tox\\_shiny](https://github.com/SCCWRP/aq_mp_tox_shiny) and [https://github.com/SCCWRP/human\\_mp\\_tox\\_shiny](https://github.com/SCCWRP/human_mp_tox_shiny), respectively.

#### Declarations

##### Competing interests

The authors L.M.T.H., H.L., S.C., E.D., H.D., L.H., E.M., V.N.R., A.F., S.K., L.M., S.S., J.V. and A.C.M. declare having no known competing financial interests or professional relationships that could have appeared to influence the work reported in this paper.

The following authors declare financial interests/professional relationships which may be considered as potential competing interests:

– A.A.K. reports a relationship with World Health Organization, European Food Safety Authority, United Nations, and SAPEA European Commission Group of Chief Scientific Advisors that includes consulting or advisory, and financial support in the form of funding grants or travel reimbursement. A.A.K. also acknowledges research funding from the European Chemical Industry Council, the Dutch Research Council, the Norwegian Research Council and Rijkswaterstaat Water Traffic and Living Environment. All research is carried out under the Dutch code of conduct for scientific integrity.

– S.M.B. reports a relationship with Ocean Science Trust that includes consulting or advisory and acknowledges funding from the National Science Foundation under grant agreement No. 1935028.

– S.S. acknowledges funding from the National Science Foundation under grant agreement No. 1935028.

– M.W. reports a relationship with The European Parliament, SAPEA and European Commission Group of Chief Scientific Advisors, The World Bank, the Food Packaging Forum, and Hold Norge Rent that includes travel reimbursement. M.W. reports a relationship with the Norwegian Committee for Food and the Environment that included travel reimbursement and consulting.

– C.M.R. reports a relationship with Ocean Conservancy as a Scientific Advisor.

– L.H. acknowledges fundings from Environment and Climate Change Canada.

##### Author details

<sup>1</sup>Toxicology Department, Southern California Coastal Water Research Project, 3535 Harbor Blvd. Suite 110, Costa Mesa, CA 92626-1437, USA. <sup>2</sup>Department of Natural Resources and Environmental Science, University of Nevada Reno, Reno, NV, USA. <sup>3</sup>California State Water Resources Control Board, Sacramento, CA, USA. <sup>4</sup>Department of Ecology and Evolutionary Biology, University of Toronto, Toronto, Ontario, Canada. <sup>5</sup>San Francisco Estuary Institute, Richmond, CA, USA. <sup>6</sup>Aquatic Ecology and Water Quality Management Group, Wageningen University, Wageningen, The Netherlands. <sup>7</sup>Department of Biology, Norwegian University of Science and Technology (NTNU), Trondheim, Norway. <sup>8</sup>Department of Fisheries, Wildlife, and Conservation Sciences, Coastal Oregon Marine Experiment Station, Oregon State University, Newport, OR, USA.

Received: 8 November 2021 Accepted: 21 April 2022

Published online: 28 May 2022

#### References

- Rochman CM, Brookson C, Bikker J, Djuric N, Earn A, Bucci K, et al. Rethinking microplastics as a diverse contaminant suite. *Environ Toxicol Chem.* 2019;38(4):703–11.
- Bucci K, Tulio M, Rochman CM. What is known and unknown about the effects of plastic pollution: a meta-analysis and systematic review. *Ecol Appl.* 2020;30(2):e02044.
- Foley CJ, Feiner ZS, Malinich TD, Hook TO. A meta-analysis of the effects of exposure to microplastics on fish and aquatic invertebrates. *Sci Total Environ.* 2018;631–632:550–9.
- Wright SL, Thompson RC, Galloway TS. The physical impacts of microplastics on marine organisms: a review. *Environ Pollut.* 2013;178:483–92.
- Noventa S, Boyles MSP, Seifert A, Belluco S, Sánchez Jiménez A, Johnston HJ, et al. Paradigms to assess the human health risks of nano- and microplastics. *Microplastic Nanoplastics.* 2021;1(9).
- Prata JC, da Costa JP, Lopes I, Duarte AC, Rocha-Santos T. Environmental exposure to microplastics: an overview on possible human health effects. *Sci Total Environ.* 2020;702:134455.

7. Rodrigues MO, Abrantes N, Goncalves FJM, Nogueira H, Marques JC, Goncalves AMM. Impacts of plastic products used in daily life on the environment and human health: what is known? *Environ Toxicol Pharmacol*. 2019;72:103239.
8. World Health Organization. Microplastics in drinking water; 2019.
9. Borrelle SB, Ringma J, Lavender Law K, Monnahan CC, Lebreton L, McGivern A, et al. Predicted growth in plastic waste exceeds efforts to mitigate plastic pollution. *Science*. 2020;369(6510):1515–8.
10. Lau WWY, Shiran Y, Bailey RM, Cook ED, Stuchtey MR, Koskella J, et al. Evaluating scenarios toward zero plastic pollution. *Science*. 2020;369(6510):1455–61.
11. California Ocean Protection Act. Public Resources Code. Sect. 35635 2018.
12. California Safe Drinking Water Act. Health and Safety Code. Sect. 116376 2018.
13. Lambert S, Scherer C, Wagner M. Ecotoxicity testing of microplastics: considering the heterogeneity of physiochemical properties. *Integr Environ Assess Manag*. 2017;13(3):470–5.
14. Granek EF, Brander SM, Holland EB. Microplastics in aquatic organisms: improving understanding and identifying research directions for the next decade. *Limnol Oceanogr Lett*. 2020;5(1):1–4.
15. Coffin S, Weisberg SB. Understanding health effects pathways and thresholds: filling a critical need to support microplastics management. *Microplastic Nanoplastic*. 2022;2(1):1–4.
16. de Ruijter VN, Redondo-Hasselerharm PE, Gouin T, Koelmans AA. Quality criteria for microplastic effect studies in the context of risk assessment: a critical review. *Environ Sci Technol*. 2020;54(19):11692–705.
17. Jacob H, Besson M, Swarzenski PW, Lecchini D, Metian M. Effects of virgin micro- and Nanoplastics on fish: trends, meta-analysis, and perspectives. *Environ Sci Technol*. 2020;54(8):4733–45.
18. Koelmans AA, Redondo-Hasselerharm PE, Mohamed Nor NH, Kooi M. Solving the nonalignment of methods and approaches used in microplastic research to consistently characterize risk. *Environ Sci Technol*. 2020;54(19):12307–15.
19. Jåms IB, Windsor FM, Poudevigne-Durance T, Ormerod SJ, Durance I. Estimating the size distribution of plastics ingested by animals. *Nat Commun*. 2020;11(1):1594.
20. California State Water Resources Control Board. Adoption of definition of “microplastics in drinking water”; 2020. p. 1–3. Resolution No. 2020-0021.
21. Mehinto AC, Coffin S, Koelmans AA, Brander SM, Wagner M, Hampton LMT, et al. Risk-based management framework for microplastics in aquatic ecosystems. *Microplastics Nanoplastics*. 2022;2(1).
22. Gouin T, Ellis-Hutchings R, Thornton Hampton L, Lemieux C, Wright S. Screening and prioritization of nano- and microplastic particle toxicity studies for evaluating human health risks – development and application of a toxicity study assessment tool. *Microplastics Nanoplastics*. 2022;2(1).
23. Coffin S, Bouwmeester H, Brander SM, Damdimopoulou P, Gouin T, Hermabessiere L, et al. Development and application of a health-based framework for informing regulatory action in relation to exposure of microplastic particles in California drinking water. *Microplastics Nanoplastics*. 2022b;2(1):1–4.
24. Kooi M, Koelmans AA. Simplifying microplastic via continuous probability distributions for size, shape, and density. *Environ Sci Technol Lett*. 2019;6(9):551–7.
25. Kooi M, Primpke S, Mintenig SM, Lorenz C, Gerdts G, Koelmans AA. Characterizing the multidimensionality of microplastics across environmental compartments. *Water Res*. 2021;17429.
26. Chang W, Cheng J, Allaire J, Xie Y, McPherson J. Shiny: web application framework for R. Boston: RStudio; 2019.
27. Khan A. Interactive collapsible tree diagrams using 'D3.js'. Version 0.1.7; 2018. <https://cran.r-project.org/web/packages/collapsibleTree/collapsibleTree.pdf>.
28. Ziajahromi S, Kumar A, Neale PA, Leusch FDL. Impact of microplastic beads and fibers on Waterflea (*Ceriodaphnia dubia*) survival, growth, and reproduction: implications of single and mixture exposures. *Environ Sci Technol*. 2017;51(22):13397–406.
29. Clarke E, Sherill-Mix S. ggbeeswarm: Categorical Scatter (Violin Point) Plots. Version 0.6.0. 2017. <https://cran.rproject.org/web/packages/ggbeeswarm/ggbeeswarm.pdf>.
30. Thorley J, Schwarz C. Ssdtools: an R package to fit species sensitivity distributions. *J Open Source Software*. 2018;3(31):1082.
31. Koelmans AA, Besseling E, Foekema E, Kooi M, Mintenig S, Ossendorp BC, et al. Risks of plastic debris: Unravelling fact, opinion, perception, and belief. *Environ Sci Technol*. 2017;51(20):11513–9.
32. U.S. Environmental Protection Agency. 2022. ECOTOX user guide: ECOTOXicology knowledgebase system. Version 5.3. Available: <http://www.epa.gov/ecotox/>.
33. Hampton LMT, Bouwmeester H, Brander S, Coffin S, Cole M, Hermabessiere L, et al. Research Recommendations to Better Understand the Potential Health Impacts of Microplastics to Humans and Aquatic Ecosystems. *Microplastics and Nanoplastics*. In Review.
34. Belanger S, Barron M, Craig P, Dyer S, Galay-Burgos M, Hamer M, et al. Future needs and recommendations in the development of species sensitivity distributions: estimating toxicity thresholds for aquatic ecological communities and assessing impacts of chemical exposures. *Integr Environ Assess Manag*. 2017;13(4):664–74.

### Publisher's Note

Springer Nature remains neutral with regard to jurisdictional claims in published maps and institutional affiliations.

**Submit your manuscript to a SpringerOpen<sup>®</sup> journal and benefit from:**

- Convenient online submission
- Rigorous peer review
- Open access: articles freely available online
- High visibility within the field
- Retaining the copyright to your article

---

Submit your next manuscript at ► [springeropen.com](https://www.springeropen.com)

---